

Gas Scrubber Valve Model 80 / 80S

Bulletin SSIN001 Issue/Rev. 0.1 (8/17)

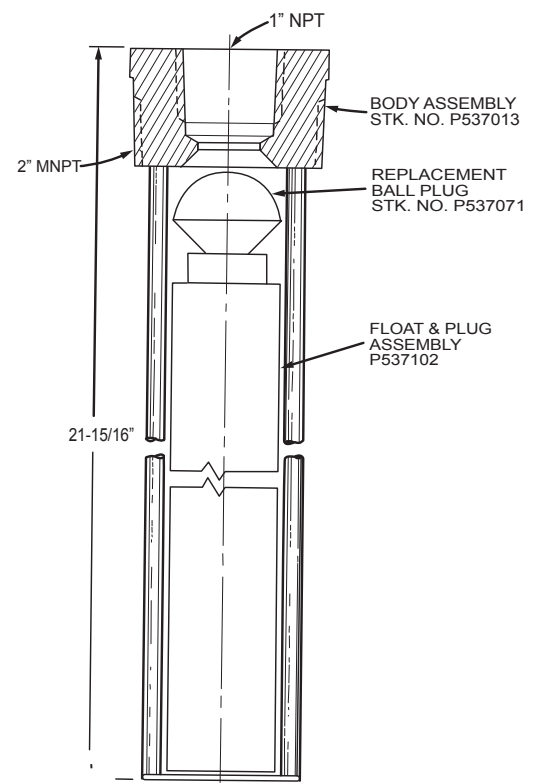
The **Model 80S Gas Scrubber Valve** is used in Fuel Gas Scrubbers, and Air Eliminators. Installs through 2" pipe coupling or can be wholly contained by mounting by 1" nipple welded through cover. The model 80S is a direct replacement for the Model 80 Scrubber Valve.

Specifications

Body	
	1018 Carbon Steel
Connections	
	1" FNPT x 2" MNPT
Maximum Working Pressure *	
	175 psi
Temperature Limits	
	-20°F to +250°F
Float	
	- Glass Filled Nylon
	- Float Specific Gravity
	- 0.5
Seal	
	Fluoroelastomer / Fluoroelastomer

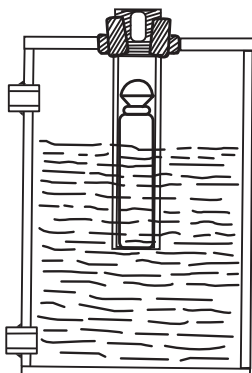


Model 80S Gas Scrubber Valve



Installation In Fuel Gas Scrubber

Note: *High Pressure Available. Consult Factory.



The specifications contained herein are subject to change without notice and any user of said specifications should verify from the manufacturer that the specifications are currently in effect. Otherwise, the manufacturer assumes no responsibility for the use of specifications which may have been changed and are no longer in effect.
Contact information is subject to change. For the most current contact information, visit our website at www.fmctechnologies.com/measurementsolutions and click on the "Contact Us" link in the left-hand column.

TechnipFMC.com

FMCTechnologies.com/MeasurementSolutions

© TechnipFMC 2017 SSIN001 Issue/Rev. 0.1 (8/17)

TechnipFMC
FMC Technologies
Measurement Solutions, Inc.
500 North Sam Houston Parkway West,
Suite 100
Houston, Texas 77067 USA
P:+1 281.260.2190

USA Operation
1602 Wagner Avenue
Erie, Pennsylvania 16510 USA
P:+1 814.898.5000

Germany Operation
Smith Meter GmbH
Regentstrasse 1
25474 Ellerbek, Germany
P:+49 4101.304.0