

## U500w Ultrasonic Meter

Cold Water Stainless Steel Meter, 5/8, 5/8 x 3/4, 3/4 and 1 inch  
NSF/ANSI Standard 61 Certified, Annex G

### DESCRIPTION

The U500w Ultrasonic meter uses solid-state technology in a compact, totally encapsulated, weatherproof, and UV-resistant housing, suitable for building and property management submetering applications. Electronic metering provides information—such as rate of flow and reverse flow indication—and data not typically available through traditional, mechanical meters and registers. Electronic metering eliminates measurement errors due to sand, suspended particles and pressure fluctuations.

**Offered in four sizes and lay lengths, the U500w meter features:**

- Minimum extended low-flow rate lower than typical positive displacement meters.
- Simplified one-piece electronic meter and register that are integral to the meter body and virtually maintenance free.
- Sealed, non-removable, tamper-protected meter and register.
- Easy-to-read, 9-digit LCD display presents consumption, rate of flow, reverse-flow indication, and alarms.
- Battery powered—eliminates wiring.
- Compatible with AquaCUE<sup>®</sup> Flow Measurement Manager.

The U500w meter is available with an in-line connector for easy connection and installation to AquaCUE connectors.

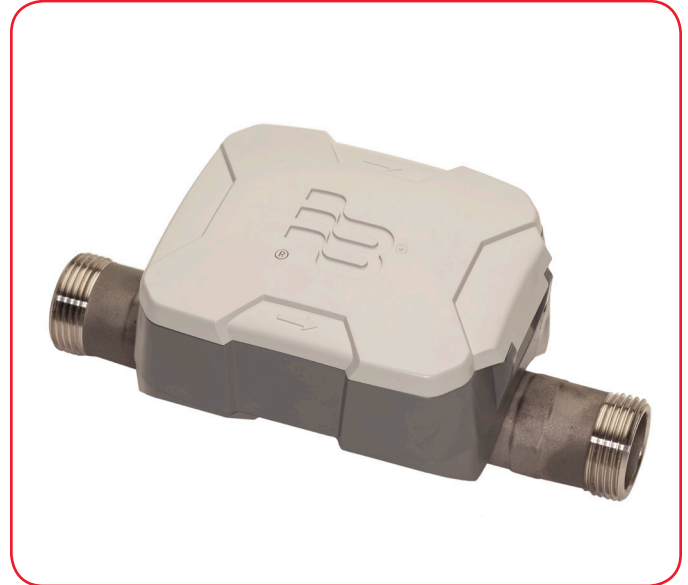
### APPLICATIONS

Use the U500w meter for measuring potable cold water in building/property management and industrial applications. The meter is also ideal for non-potable, reclaimed irrigation water applications or less than optimum water conditions where small particles exist.

The U500w meter complies with applicable portions of ANSI/AWWA Standard C700 and NSF/ANSI Standard 61, Annex G. There is currently no AWWA standard that specifically addresses ultrasonic meters for residential applications.

### OPERATION & PERFORMANCE

As water flows into the measuring tube, ultrasonic signals are sent consecutively in forward and reverse directions of flow. Velocity is then determined by measuring the time difference between the measurement in the forward and reverse directions. Total volume is calculated from the measured flow velocity using water temperature and pipe diameter. The LCD display shows total volume and alarm conditions and can toggle to display rate of flow.



In the normal temperature range of 45...85° F (7...29° C), the U500w “new meter” consumption measurement is accurate to:

- $\pm 1.5\%$  over the normal flow range
- $\pm 3.0\%$  from the extended low flow range to the minimum flow value

### CONSTRUCTION

The U500w meters feature a stainless steel, lead-free meter housing, an engineered polymer and stainless steel metering insert, a meter-control circuit board with associated wiring, LCD, and battery. Wetted elements are limited to the pressure vessel, polymer/stainless steel metering insert and the transducers. The electronic components are housed and fully potted within a molded, engineered polymer enclosure, which is permanently attached to the meter housing. The transducers extend through the stainless steel housing and are sealed by O-rings.

The metering insert holds the stainless steel ultrasonic reflectors in the center of the flow area, enabling turbulence-free water flow through the tube and around the ultrasonic signal reflectors. The metering insert's patented design virtually eliminates chemical buildup on the reflectors, ensuring long-term metering accuracy.

### METER INSTALLATION

The meter is completely submersible and can be installed using horizontal or vertical piping, with flow in the up direction. The meter will not measure flow when an “empty pipe” condition is experienced. An empty pipe is defined as a condition that occurs when the pipe is partially full.

## SPECIFICATIONS

U500w Ultrasonic Meter Size	5/8 in. (16 mm)	5/8 x 3/4 in. (16 x 19 mm)	3/4 in. (19 mm)	1 in. (25 mm)
<b>Operating Range</b>	0.1...25 gpm (0.4...95 lpm)	0.1...25 gpm (0.4...95 lpm)	0.1...32 gpm (0.4...121 lpm)	0.4...55 gpm (1.5...208 lpm)
<b>Extended Low-Flow Rate</b>	0.05 gpm (0.2 lpm)	0.05 gpm (0.2 lpm)	0.05 gpm (0.2 lpm)	0.25 gpm (95 lpm)
<b>Maximum Continuous Operation</b>	25 gpm (95 lpm)	25 gpm (95 lpm)	32 gpm (121 lpm)	55 gpm (208 lpm)
<b>Pressure Loss</b>	4.3 psi at 15 gpm (0.3 bar @ 57 lpm)	2.3 psi at 15 gpm (1.6 bar @ 57 lpm)	2.0 psi at 15 gpm (0.14 bar @ 57 lpm)	1.8 psi at 25 gpm (0.12 bar @ 95 lpm)
<b>Reverse Flow - Maximum Rate</b>	4.0 gpm (15 lpm)	4.0 gpm (15 lpm)	4.0 gpm (15 lpm)	9.0 gpm (34 lpm)
<b>Operating Performance</b>	In the normal temperature range of 45...85° F (7...29° C), new meter consumption measurement is accurate to: <ul style="list-style-type: none"> <li>• ±1.5% over the normal flow range</li> <li>• ±3.0% from the extended low flow range to the minimum flow value</li> </ul>			
<b>Storage Temperature</b>	- 40...140° F (- 40...60° C)			
<b>Maximum Ambient Storage (Storage for One Hour)</b>	150° F (72° C)			
<b>Measured-Fluid Temperature Range</b>	34...140° F (1°...60° C)			
<b>Humidity</b>	0...100% condensing; meter is capable of operating in fully submerged environments			
<b>Maximum Operating Pressure of Meter Housing</b>	175 psi (12 bar)			
<b>Register Type</b>	Straight reading, permanently sealed electronic LCD; digits are 0.28 in. (7 mm) high			
<b>Register Display</b>	<ul style="list-style-type: none"> <li>• Consumption (up to nine digits)</li> <li>• Rate of flow (US gallons per minute or cubic meters per hour)</li> <li>• Alarms</li> <li>• Unit of measure factory programmed for gallons, cubic feet and cubic meters</li> </ul>			
<b>Register Capacity</b>	<ul style="list-style-type: none"> <li>• 10,000,000 gallons</li> <li>• 1,000,000 cubic feet</li> <li>• 100,000 cubic meters</li> </ul>			
<b>Totalization Display Resolution</b>	<ul style="list-style-type: none"> <li>• Gallons: 0.XX</li> <li>• Cubic feet: 0.XXX</li> <li>• Cubic meters: 0.XXXX</li> </ul>			
<b>Battery</b>	3.6-volt lithium thionyl chloride; battery is fully encapsulated within the register housing and is not replaceable; 20-year battery life			

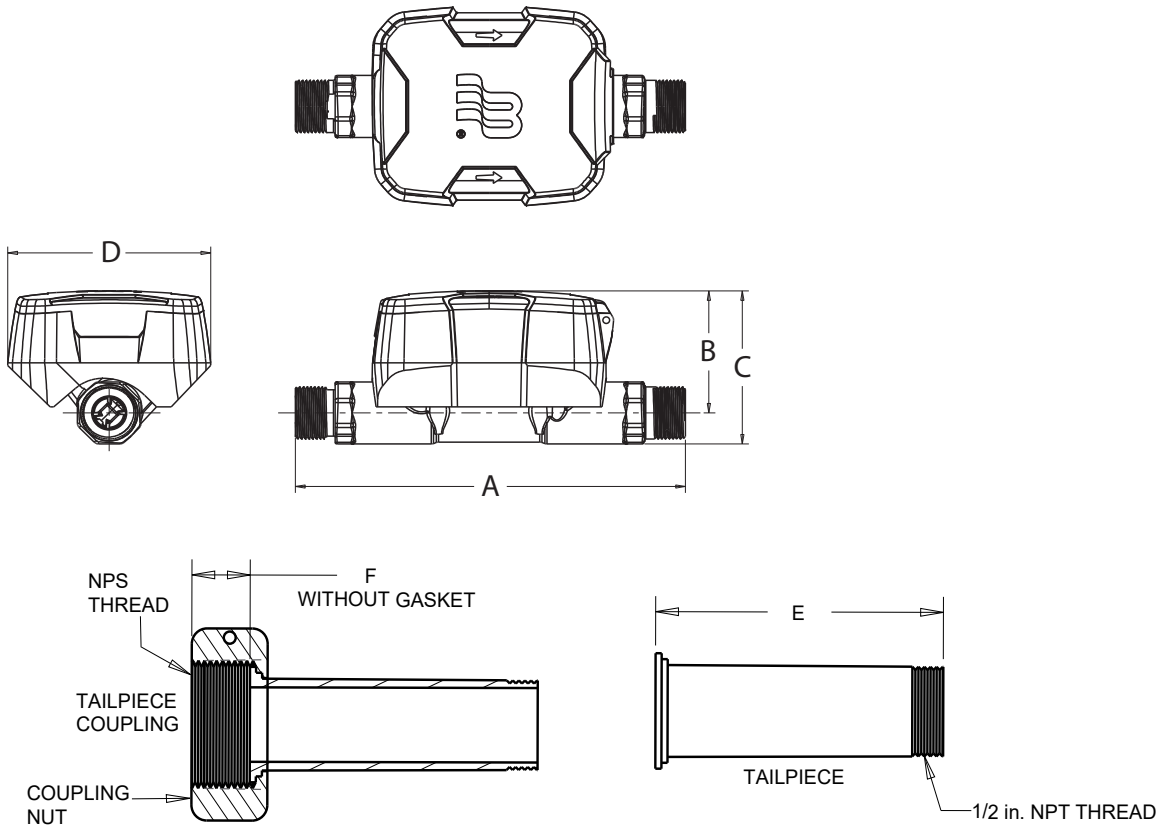
## MATERIALS

<b>Meter Housing</b>	316 stainless steel
<b>Measuring Element</b>	Pair of ultrasonic sensors located in the flow tube
<b>Register Housing &amp; Lid</b>	Engineered polymer
<b>Metering Insert</b>	Engineered polymer & stainless steel
<b>Transducers</b>	Piezo-ceramic device with wetted surface of stainless CrNiMo

**PHYSICAL DIMENSIONS**

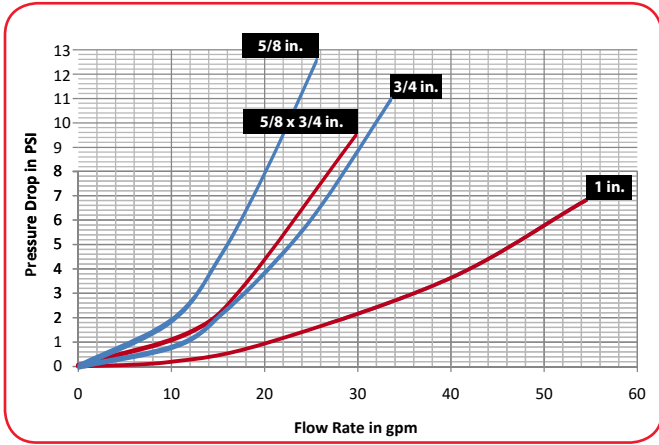
U500w Ultrasonic Meter Size	5/8 in. (16 mm)	5/8 x 3/4 in. (16 x 19 mm)	3/4 in. (19 mm)	1 in. (25 mm)
Size Designation X Lay Length	5/8 x 7-1/2 in. (16 x 191 mm)	5/8 x 3/4 x 7-1/2 in. (16 x 19 x 1901 mm)	3/4 x 7-1/2 in. or 3/4 x 9 in. (19 x 191 mm or 19 x 229 mm)	1 x 10-3/4 in. (25 x 273 mm)
Weight (without AquaCUE connector)	2.2 lb (1 kg)	2.1 lb (0.95 kg)	3/4 x 7-1/2 in.: 2.1 lb 3/4 x 9 in.: 2.4 lb (20 x 190 mm.: 0.95 kg or 20 x 229 mm: 1.08 kg)	3.1 lb (1.4 kg)
See illustrations below for Measurement Designations.				
Length (A)	7.5 in.(190 mm)	7.5 in.(190 mm)	7.5 in. or 8.98 in. (190 mm or 228 mm)	10.745 in. (273 mm)
Height (B)	2.404 in. (61 mm)	2.404 in. (61 mm)	2.404 in. (61 mm)	2.529 in. (64 mm)
Height (C)	3.014 in. (76 mm)	3.014 in. (76 mm)	3.094 in. (79 mm)	3.359 in. (85 mm)
Width (D)	3.898 in. (99 mm)	3.898 in. (99 mm)	3.898 in. (99 mm)	3.898 in. (99 mm)
Bore Size	5/8 in. (16 mm)	3/4 in. (19 mm)	3/4 in. (19 mm)	1 in. (25 mm)
Meter Thread	3/4 in. x 14 NPSM	1 in. x 11-1/2 NPSM	1 in. x 11-1/2 NPSM	1-1/4 in. x 11-1/2 NPSM
Tailpiece Length (E)	2.38 in.	2.50 in.	2.50 in.	2.62 in.
Tailpiece Coupling (F)	0.51 in.	0.47 in.	0.47 in.	0.50 in.
Tailpiece Pipe Adapter Thread (NPT)	1/2 in. (13 mm)	3/4 in. (19 mm)	3/4 in. (19 mm)	1 in. (25 mm)

**Measurement Designations**



## PRESSURE LOSS CHART

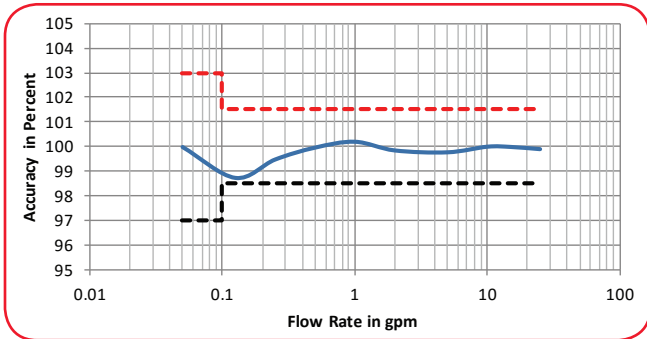
Rate of Flow in gallons per minute (gpm)



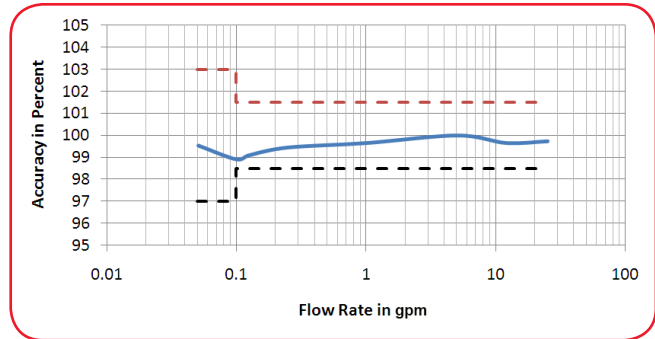
## ACCURACY CHARTS

Rate of Flow in gallons per minute (gpm)

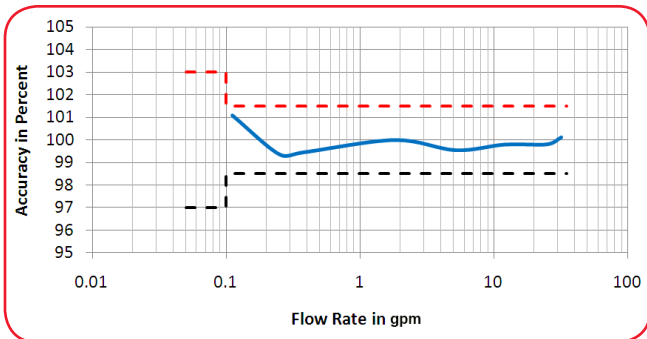
5/8 in. Meter



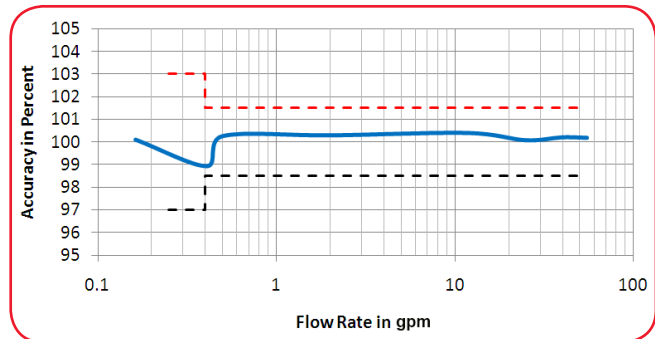
5/8 x 3/4 in. Meter



3/4 in. Meter



1 in. Meter



**PART NUMBERS**

**Meter 5/8 inch**

Dynasonics	UB	EAA		X	ES	CA	1	A1	Y2	XX	TF	XX	B0A
<b>U500w Ultrasonic Meters</b>													
<b>PRODUCT TYPE</b>	Stainless Steel Meter												
	UB												
<b>METER TYPE</b>	5/8 in. (1/2 x 7-1/2 in.)	EAA											
<b>WATER APPLICATION</b>	Polable Water												
	Reclaimed Water (Stainless Steel Meter Only)												
<b>CONNECTIONS / GASKETS</b>	NPT Straight Adapter - Thick Washers					SC							
	NPSM - Thick Washers					XT							
<b>ACCESSORIES</b>	None			X									
<b>REGISTRATION</b>	Encoder				ES								
<b>TECHNOLOGY</b>	Meter with Cable (No Endpoint)					CA							
<b>REGISTRATION FACE</b>	Standard						1						
<b>UNIT OF MEASURE / DIAL RESOLUTION OUTPUT / VISUAL BILLING UNITS</b>	9 Dial - 0.01 Gallon, GPM, 1000												9AE
	9 Dial - 0.001 f3, GPM, 100												9FD
	9 Dial - 0.0001 M3, GPM, 10												9MC
<b>TESTING</b>	BADGER STD (TS-419)								A1				
<b>SERIALIZATION</b>	Year of Mfg   9 Digit S/N								Y2				
<b>APPLICATION (See Note)</b>	None									XX			
<b>WIRING METHOD (See Note)</b>	Twist Tight - 5 ft (MTR, ASSY)										TF		
<b>ENDPOINT SHIPMENT MODE</b>	N/A											XX	
<b>RESERVED</b>	Standard												B0A

**Meter 5/8 x 3/4 inch**

Dynasonics	UB	EAC		X	ES	CA	1	A2	Y2	XX	TF	XX	B0A
<b>U500w Ultrasonic Meters</b>													
<b>PRODUCT TYPE</b>	Stainless Steel Meter												
	UB												
<b>METER TYPE</b>	5/8 in. x 3/4 in. (3/4 x 7-1/2 in.)	EAC											
<b>WATER APPLICATION</b>	Polable Water												
	Reclaimed Water												
<b>CONNECTIONS / GASKETS</b>	NPT Straight Adapter - Thick Washers					SC							
	NPSM - Thick Washers					XT							
<b>ACCESSORIES</b>	None			X									
<b>REGISTRATION</b>	Encoder				ES								
<b>TECHNOLOGY</b>	Meter with Cable (No Endpoint)					CA							
<b>REGISTRATION FACE</b>	Standard						1						
<b>UNIT OF MEASURE / DIAL RESOLUTION OUTPUT / VISUAL BILLING UNITS</b>	9 Dial - 0.01 Gallon, GPM, 1000												9AE
	9 Dial - 0.001 f3, GPM, 100												9FD
	9 Dial - 0.0001 M3, GPM, 10												9MC
<b>TESTING</b>	BADGER STD (TS-420)								A2				
<b>SERIALIZATION</b>	Year of Mfg   9 Digit S/N								Y2				
<b>APPLICATION (See Note)</b>	None									XX			
<b>WIRING METHOD (See Note)</b>	Twist Tight - 5 ft (MTR, ASSY)										TF		
<b>ENDPOINT SHIPMENT MODE</b>	N/A											XX	
<b>RESERVED</b>	Standard												B0A

**NOTE:** For connectivity to AquaCUE, contact your Sales Representative.

**Meter 3/4 x 7-1/2 inch**

Dynasonics		UB	EBA		X	E5	CA	1		A3	Y2	XX	TF	XX	B0A	
<b>U500w Ultrasonic Meters</b>																
<b>PRODUCT TYPE</b>																
Stainless Steel Meter		UB														
<b>METER TYPE</b>																
3/4 in. (3/4 x 7-1/2 in.)		EBA														
<b>WATER APPLICATION</b>																
Potable Water														P		
Reclaimed Water														R		
<b>CONNECTIONS / GASKETS</b>																
NPT Straight Adapter- Thick Washers															SC	
NPSM - Thick Washers															XT	
<b>ACCESSORIES</b>																
None														X		
<b>REGISTRATION</b>																
Encoder															E5	
<b>TECHNOLOGY</b>																
Meter with Cable (No Endpoint)															CA	
<b>REGISTRATION FACE</b>																
Standard															1	
<b>UNIT OF MEASURE / DIAL RESOLUTION OUTPUT / VISUAL BILLING UNITS</b>																
9 Dial - 0.01 Gallon, GPM, 1000																9AE
9 Dial - 0.001 ft3, GPM, 100																9FD
9 Dial - 0.0001 M3, GPM, 10																9MC
<b>TESTING</b>																
BADGER STD (TS-421)																A3
<b>SERIALIZATION</b>																
Year of Mfg   9 Digit S/N																Y2
<b>APPLICATION (See Note)</b>																
None																XX
<b>WIRING METHOD (See Note)</b>																
Twist Tight - 5 ft (MTR, ASSY)																TF
<b>ENDPOINT SHIPMENT MODE</b>																
N/A																XX
<b>RESERVED</b>																
Standard																B0A

**Meter 3/4 x 9 inch**

Dynasonics		UB	EBB		X	E5	CA	1		A3	Y2	XX	TF	XX	B0A	
<b>U500w Ultrasonic Meters</b>																
<b>PRODUCT TYPE</b>																
Stainless Steel Meter		UB														
<b>METER TYPE</b>																
3/4 in. (3/4 x 9 in.)		EBB														
<b>WATER APPLICATION</b>																
Potable Water															P	
Reclaimed Water															R	
<b>CONNECTIONS / GASKETS</b>																
NPT Straight Adapter - Thick Washers															SC	
NPSM - Thick Washers															XT	
<b>ACCESSORIES</b>																
None														X		
<b>REGISTRATION</b>																
Encoder															E5	
<b>TECHNOLOGY</b>																
Meter with Cable (No Endpoint)															CA	
<b>REGISTRATION FACE</b>																
Standard															1	
<b>UNIT OF MEASURE / DIAL RESOLUTION OUTPUT / VISUAL BILLING UNITS</b>																
9 Dial - 0.01 Gallon, GPM, 1000																9AE
9 Dial - 0.001 ft3, GPM, 100																9FD
9 Dial - 0.0001 M3, GPM, 10																9MC
<b>TESTING</b>																
BADGER STD (TS-421)																A3
<b>SERIALIZATION</b>																
Year of Mfg   9 Digit S/N																Y2
<b>APPLICATION (See Note)</b>																
None																XX
<b>WIRING METHOD (See Note)</b>																
Twist Tight - 5 ft (MTR, ASSY)																TF
<b>ENDPOINT SHIPMENT MODE</b>																
N/A																XX
<b>RESERVED</b>																
Standard																B0A

**NOTE:** For connectivity to AquaCUE, contact your Sales Representative.

**Meter 1 inch**

**Dynasonics**

**U500w Ultrasonic Meters**

	UB	ECA		X	ES	CA	1		A4	Y3	XX	TF	XX	B0A
<b>PRODUCT TYPE</b>														
Stainless Steel Meter	UB													
<b>METER TYPE</b>														
1 in. (1 x 10-3/4 in.)		ECA												
<b>WATER APPLICATION</b>														
Potable Water														
Reclaimed Water														
<b>CONNECTIONS / GASKETS</b>														
NPT Straight Adapter- Thick Washers														
NPSM - Thick Washers														
<b>ACCESSORIES</b>														
None				X										
<b>REGISTRATION</b>														
Encoder					ES									
<b>TECHNOLOGY</b>														
Meter with Cable (No Endpoint)						CA								
<b>REGISTRATION FACE</b>														
Standard							1							
<b>UNIT OF MEASURE / DIAL RESOLUTION OUTPUT / VISUAL BILLING UNITS</b>														
9 Dial - 0.01 Gallon, GPM, 1000									9AE					
9 Dial - 0.001 ft3, GPM, 100									9FD					
9 Dial - 0.0001 M3, GPM, 10									9MC					
<b>TESTING</b>														
BADGER STD (TS-422)									A4					
<b>SERIALIZATION</b>														
Year of Mfg   9 Digit S/N   Barcoded   Primary and Lid Outside										Y3				
<b>APPLICATION (See Note)</b>														
None											XX			
<b>WIRING METHOD (See Note)</b>														
Twist Tight - 5 ft (MTR, ASSY)												TF		
<b>ENDPOINT SHIPMENT MODE</b>														
N/A													XX	
<b>RESERVED</b>														
Standard														B0A

**NOTE:** For connectivity to AquaCUE, contact your Sales Representative.

## Control. Manage. Optimize.

Dynasonics is a registered trademark of Badger Meter, Inc. Other trademarks appearing in this document are the property of their respective entities. Due to continuous research, product improvements and enhancements, Badger Meter reserves the right to change product or system specifications without notice, except to the extent an outstanding contractual obligation exists. © 2019 Badger Meter, Inc. All rights reserved.

**[www.badgermeter.com](http://www.badgermeter.com)**

---

The Americas | **Badger Meter** | 4545 West Brown Deer Rd | PO Box 245036 | Milwaukee, WI 53224-9536 | 800-876-3837 | 414-355-0400  
México | **Badger Meter de las Americas, S.A. de C.V.** | Pedro Luis Ogazón N°32 | Esq. Angelina N°24 | Colonia Guadalupe Inn | CP 01050 | México, DF | México | +52-55-5662-0882  
Europe, Eastern Europe Branch Office (for Poland, Latvia, Lithuania, Estonia, Ukraine, Belarus) | **Badger Meter Europe** | ul. Korfantego 6 | 44-193 Knurów | Poland | +48-32-236-8787  
Europe, Middle East and Africa | **Badger Meter Europa GmbH** | Nurtinger Str 76 | 72639 Neuffen | Germany | +49-7025-9208-0  
Europe, Middle East Branch Office | **Badger Meter Europe** | PO Box 341442 | Dubai Silicon Oasis, Head Quarter Building, Wing C, Office #C209 | Dubai / UAE | +971-4-371 2503  
Slovakia | **Badger Meter Slovakia s.r.o.** | Racianska 109/B | 831 02 Bratislava, Slovakia | +421-2-44 63 83 01  
Asia Pacific | **Badger Meter** | 80 Marine Parade Rd | 19-07 Parkway Parade | Singapore 449269 | +65-63464836  
Switzerland | **Badger Meter Swiss AG** | Mittelholzerstrasse 8 | 3006 Bern | Switzerland | +41-31-932 01 11